

JAX[®] Mice Pup Sexing Guide

Approximate Days of Age

2-3

5-6

10

14

21

BALB/cJ

Stock #000651
Coat Color: albino



C3H/HeJ

Stock #000659
Coat Color: agouti



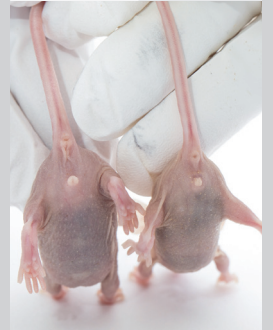
C57BL/6J

Stock #000664
Coat Color: black



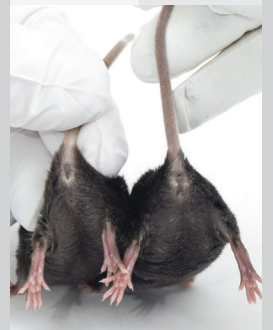
NU/J

Stock #002019
Coat Color: nude



B6.Cg-Lep^{ob}/J

Stock #000632
Obese (ob/ob)



♂

♀

♂

♀

♂*

♀*

♂*

♀*

♂

♀

Males - left

Females - right

- The anogenital distance differs between female and male (male distance is longer).
- Look for mammary glands in the females.

*Note: Notice the difference in size and shape. Male (left) mouse is a HOM. Female (right) is a HET.



The Jackson
Laboratory

PS0007 2023.08

To order JAX[®] Mice:

1-800-422-6423

orderquest@jax.org

jax.org/jax-mice-and-services